

HCOM SERIES

Horizontal Composite 42"-48"-63"-79"

High-Rate Commercial Sand Filters

HCOM SERIES FILTER APPLICATIONS

- Commercial Pools
- Institutional & Recreational Pools
- Industrial & Municipal water Treatment
- Waterparks
- Aquatic Amusement Parks
- Aquariums & Zoos
- Industrial Filtration
- Potable Water Systems
- Aquaculture
- Groundwater Remediation
- Irrigation
- Agriculture

HCOM SERIES FILTER CONSTRUCTION

- Non-Corrosive Fiberglass Horizontal Composite Construction, filament wound with polyester resin.
- Polyester Gel-Coat interior for superior corrosion resistance and protects against abrasion from sand or salt water.
- 50 psi working pressure, test pressure 75psi (Available with 100 psi working pressure, tested at 150 psi).
- Full 15 year warranty.
- NSF Standard 50 Listed.
- Automatic Air Release and Emergency relief valves.
- 16" Man-way.
- TP 304 Stainless Steel Hardware in Wetted Areas.
- 4" Media dump port and winterizing drain.
- Water Drain $\frac{3}{4}$ " with screen.

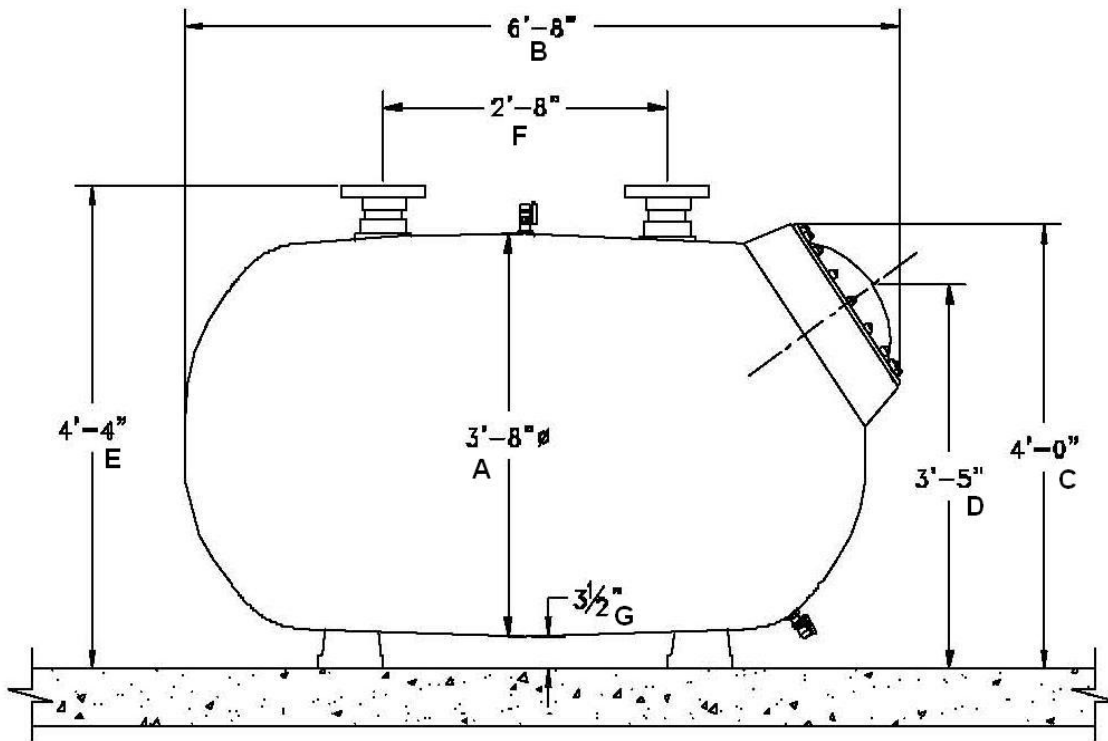
HCOM SERIES FILTER INCLUDES

- Schedule 80 PVC Face Piping with corrosion resistant butterfly valves with nylon coated discs.
- Gauge Panel with two 4½" 0-60 psi gauges with Backwash sight glass.
- Schedule PVC Header Manifolds are hydraulically engineered and factory installed with flanged connections.
- Schedule 40 PVC 1 ¼" Underdrain Laterals, machine slotted and factory installed with LIFETIME WARRANTY (Sch. 80 PVC also available).

TANK OPTIONS

- Single Lever Backwash Kit
- Automatic Backwash Controls
- Optional Interior Coatings include Epoxy, Vinyl Ester and Rubber for extended 15 year Prorated warranty.
- Skid Mounted Filter Systems.
- Various Filter Media's available.
- Industrial Pumps and Pump Strainer.

| HCOM SERIES 42"x75" COMPOSITE HI-RATE SAND FILTER -- FILTER PERFORMANCE SPECIFICATIONS -- | | | | | | | | |
|--|--------------|------------------|----------------------|------------------|------------------|--------------------------------------|--------------------------------------|--------------|
| Filter Model Number | NO. OF TANKS | Face Piping Size | Filter Area (SQ.FT.) | Flow Rate 15 GPM | Flow Rate 20 GPM | Flow Rate GPH (15 GPM) 6 Hr. / 8 Hr. | Flow Rate GPH (20 GPM) 6 Hr. / 8 Hr. | Weight |
| HCOM 4214-A HCOM 4214-M | 1 | 4" | 21 | 315 | n/a | 113,400 / 151,200 | 151,200 / 201,600 | 750 700 |
| HCOM 4216-A HCOM 4216-M | 1 | 6" | 21 | n/a | 420 | 113,400 / 151,200 | 151,200 / 201,600 | 800 750 |
| HCOM 4228-A HCOM 4228-M | 2 | 8" | 42 | 630 | 840 | 226,800 / 302,400 | 302,400 / 403,200 | 1700 1600 |
| HCOM 4238-A HCOM 4238-M | 3 | 8" | 63 | 945 | n/a | 340,200 / 453,600 | 453,600 / 604,800 | 2500 2400 |
| HCOM 42310-A HCOM 42310-M | 3 | 10" | 63 | n/a | 1,260 | 340,200 / 453,600 | 453,600 / 604,800 | 2875 2675 |
| HCOM 42410-A | 4 | 10" | 84 | 1260 | 1680 | 453,600 / 604,800 | 604,800 / 806,400 | 3570 |
| HCOM 42512-A | 5 | 12" | 105 | 1575 | 2100 | 567,000 / 756,000 | 756,000 / 1,008,000 | 5025 |
| A = Automatic Controls M = Manual Controls | | | | | | | | |



**HCOM SERIES – 42"x75" HI-RATE COMPOSITE SAND FILTERS--
-- PHYSICAL DIMENSIONS --**

| Filter Model Number | No. of Filters | Face Piping Size | A | B | C | D | E | F | G | Filter Ship Weight (Lbs.) |
|---------------------|----------------|------------------|-----|-----|-----|-----|-----|-----|--------|---------------------------|
| HCOM 42x75 | 1 | 4" | 42" | 80" | 48" | 41" | 52" | 32" | 3 1/2" | 700 |

**HCOM SERIES 42" FILTERS
-- FILTER MEDIA SPECIFICATIONS --**

| Filter Model Number | Gravel | Fiter Sand #20 (Lb.) | Filter Ship Weight (Lbs.) |
|---------------------|--------|----------------------|---------------------------|
| HCOM SERIES 42"x75" | 0 | 2100 | 700 |

**HCOM SERIES - 42"x 91"-106"-118" COMPOSITE HI-RATE SAND FILTER
-- FILTER PERFORMANCE SPECIFICATIONS --**

| Filter Model Number | NO. OF TANKS | Face Piping Size | Filter Area (SQ.FT.) | Flow Rate 15 GPM | Flow Rate 20 GPM | Flow Rate GPH (15 GPM) 6 Hr. / 8 Hr. | Flow Rate GPH (20 GPM) 6 Hr. / 8 Hr. | Weight |
|----------------------------|--------------|------------------|----------------------|------------------|------------------|--------------------------------------|--------------------------------------|--------|
| HC 42916-A HC 42916-M | 1 | 6" | 26 | 390 | 520 | 140,400 / 187,200 | 187,200 / 249,600 | 850 |
| HC 421066-A HC 421066-M | 1 | 6" | 30 | 450 | 600 | 162,000 / 216,000 | 216,000 / 288,000 | 1000 |
| HC 421186-A HC 421186-M | 1 | 6" | 34 | 510 | 680 | 183,600 / 244,800 | 244,800 / 326,400 | 1110 |

A = Automatic Controls
M = Manual Controls

**HCOM SERIES - 48"x 75"-91"-106"-118" COMPOSITE HI-RATE SAND FILTER
-- FILTER PERFORMANCE SPECIFICATIONS --**

| Filter Model Number | NO. OF TANKS | Face Piping Size | Filter Area (SQ.FT.) | Flow Rate 15 GPM | Flow Rate 20 GPM | Flow Rate GPH (15 GPM) 6 Hr. / 8 Hr. | Flow Rate GPH (20 GPM) 6 Hr. / 8 Hr. | Weight |
|----------------------------|--------------|------------------|----------------------|------------------|------------------|--------------------------------------|--------------------------------------|--------------|
| HC 48756-A HC 48756-M | 1 | 6" | 24 | 360 | 480 | 129,600 / 172,800 | 172,800 / 230,400 | 820 770 |
| HC 48916-A HC 48916-M | 1 | 6" | 29 | 435 | 580 | 156,600 / 208,800 | 208,800 / 278,400 | 1000 950 |
| HC 481066-A HC 481066-M | 1 | 6" | 34 | 510 | 680 | 183,600 / 244,800 | 244,800 / 326,400 | 1160 1110 |
| HC 481186-A HC 481186-M | 1 | 6" | 38 | 570 | 760 | 205,200 / 273,600 | 273,600 / 364,800 | 1270 1220 |

A = Automatic Controls
M = Manual Controls

**HC 48" Series filters can be configured in a multiple filter design for higher flow rates

**HCOM SERIES - 63"x 75"-91"-106"-118" COMPOSITE HI-RATE SAND FILTER
-- FILTER PERFORMANCE SPECIFICATIONS --**

| Filter Model Number | NO. OF TANKS | Face Piping Size | Filter Area (SQ.FT.) | Flow Rate 15 GPM | Flow Rate 20 GPM | Flow Rate GPH (15 GPM) 6 Hr. / 8 Hr. | Flow Rate GPH (20 GPM) 6 Hr. / 8 Hr. | Weight |
|----------------------------|--------------|------------------|----------------------|------------------|------------------|--------------------------------------|--------------------------------------|--------------|
| HC 63756-A HC 63756-M | 1 | 6" | 32 | 480 | 640 | 172,800 / 230,400 | 230,400 / 307,200 | 1190 1140 |
| HC 63916-A HC 63916-M | 1 | 6" | 37 | 555 | 740 | 199,800 / 266,400 | 266,400 / 355,200 | 1375 1325 |
| HC 631068-A HC 631068-M | 1 | 8" | 46 | 690 | 920 | 248,400 / 331,200 | 331,200 / 441,600 | 1580 1530 |
| HC 631188-A HC 631188-M | 1 | 8" | 51 | 765 | 1020 | 275,400 / 367,200 | 367,200 / 489,600 | 1800 1750 |

A = Automatic Controls

M = Manual Controls

**HC 63" Series filters can be configured in a multiple filter design for higher flow rates

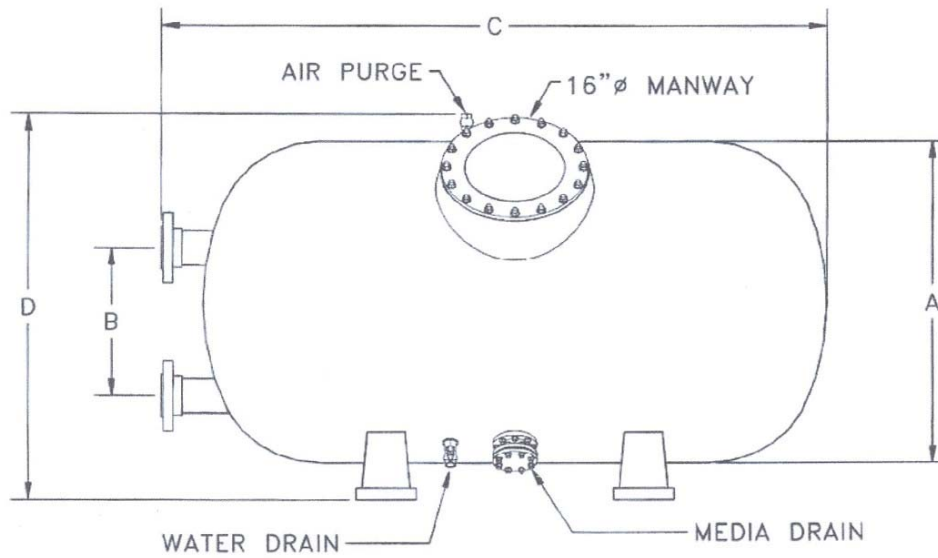
**HCOM SERIES - 79"x100"-138" COMPOSITE HI-RATE SAND FILTER
-- FILTER PERFORMANCE SPECIFICATIONS --**

| Filter Model Number | NO. OF TANKS | Face Piping Size | Filter Area (SQ.FT.) | Flow Rate 15 GPM | Flow Rate 20 GPM | Flow Rate GPH (15 GPM) 6 Hr. / 8 Hr. | Flow Rate GPH (20 GPM) 6 Hr. / 8 Hr. | Weight |
|----------------------------|--------------|------------------|----------------------|------------------|------------------|--------------------------------------|--------------------------------------|--------------|
| HC 791008-A HC 791008-M | 1 | 8" | 53 | 795 | 1060 | 286,200 / 381,600 | 381,600 / 508,800 | 2100 2050 |
| HC 791388-A HC 791388-M | 1 | 8" | 75 | 1125 | 1500 | 405,000 / 540,000 | 540,000 / 720,000 | 2900 2850 |

A = Automatic Controls

M = Manual Controls

**HC 79" Series filters can be configured in a multiple filter design for higher flow rates



**HCOM SERIES HORIZONTAL COMPOSITE SAND FILTERS
-- PHYSICAL DIMENSIONS --**

| Filter Model Number | No. of Filters | Face Piping Size | A | C | D | B | Service Weight (Lb.) | Ship Weight (Lbs.) |
|----------------------|----------------|------------------|-----|------|-----|-----|----------------------|--------------------|
| HC SERIES 42" | | | | | | | | |
| HC 42916 | 1 | 6" | 44" | 105" | 52" | 19" | 6,800 | 850 |
| HC 421066 | 1 | 6" | 44" | 120" | 52" | 19" | 8,000 | 1,000 |
| HC 421186 | 1 | 6" | 44" | 132" | 52" | 19" | 9,040 | 1,110 |
| HC SERIES 48" | | | | | | | | |
| HC 48756 | 1 | 6" | 50" | 90" | 56" | 22" | 7,100 | 820 |
| HC 48916 | 1 | 6" | 50" | 105" | 56" | 22" | 8,730 | 1,000 |
| HC 481066 | 1 | 6" | 50" | 120" | 56" | 22" | 10,340 | 1,160 |
| HC 481186 | 1 | 6" | 50" | 135" | 56" | 22" | 11,550 | 1,270 |
| HC SERIES 63" | | | | | | | | |
| HC 63756 | 1 | 6" | 66" | 92" | 73" | 32" | 11,971 | 1,190 |
| HC 63916 | 1 | 6" | 66" | 105" | 73" | 32" | 15,800 | 1,375 |
| HC 631068 | 1 | 8" | 66" | 120" | 73" | 32" | 17,500 | 1,580 |
| HC 631188 | 1 | 8" | 66" | 135" | 73" | 32" | 19,800 | 1,800 |
| HC SERIES 79" | | | | | | | | |
| HC 791008 | 1 | 8" | 82" | 115" | 90" | 36" | 25,000 | 2,100 |
| HC 791388 | 1 | 8" | 82" | 160" | 90" | 36" | 35,800 | 2,900 |

**HCOM SERIES FILTERS
-- FILTER MEDIA SPECIFICATIONS --**

| Filter Model Number | Gravel (Lb.) | Sand (Lb.) | Service Weight (Lb.) | Filter Ship Weight (Lbs.) |
|----------------------------|---------------------|-------------------|-----------------------------|----------------------------------|
| HC 42916 | 0 | 2,900 | 6,800 | 850 |
| HC 421066 | 0 | 3,400 | 8,000 | 1,000 |
| HC 421186 | 0 | 3,800 | 9,040 | 1,110 |
| HC 48756 | 1,280 | 2,200 | 7,100 | 820 |
| HC 48916 | 1,580 | 2,700 | 8,730 | 1,000 |
| HC 481066 | 1,800 | 3,200 | 10,340 | 1,160 |
| HC 481186 | 2,100 | 3,500 | 11,550 | 1,270 |
| HC 63756 | 2,180 | 3,800 | 11,971 | 1,190 |
| HC 63916 | 2,630 | 4,800 | 15,800 | 1,375 |
| HC 631068 | 3,100 | 5,400 | 17,500 | 1,580 |
| HC 631188 | 3,550 | 6,100 | 19,800 | 1,800 |
| HC 791008 | 3,700 | 9,300 | 25,000 | 2,100 |
| HC 791388 | 5,050 | 12,900 | 35,800 | 2,900 |

| | | | | |
|--|--|--|--|--|
| | | | | |
|--|--|--|--|--|